

CHI Health

Mercy Council Bluffs



Community Benefit Report FY2017

\$11,522,475 Total Community Benefit



2,172 Patients supported with Medical Financial Assistance

Community Benefit Snapshot**

Maternal & Child Health: Provide RN support to Council Bluffs teens when they become pregnant, throughout pregnancy and post-partum to ensure a healthy start for babies, as well as support teens to return to school and graduate.

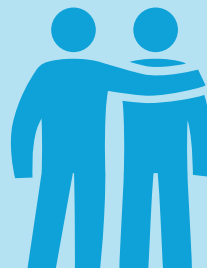


Behavioral Health

provided over **\$24,000** to the Network to identify ways to enhance the delivery of behavioral health services.



Behavioral Health: Provided **\$10,000** to Mills County Public Health to support the Family Matters Substance Abuse program which offers support groups and one-on-one counseling to families dealing with substance use issues.



Invested over **\$240,000** to support nursing student education to 632 students through clinic rotations.

Community Health Needs Assessment Priorities

Maternal & Child Health



Obesity (Nutrition, Physical Activity, & Weight Status)



Injury Prevention



Behavioral Health



***Please note these are a few select examples of the community benefit given on behalf of CHI Health Mercy Council Bluffs to this community.*