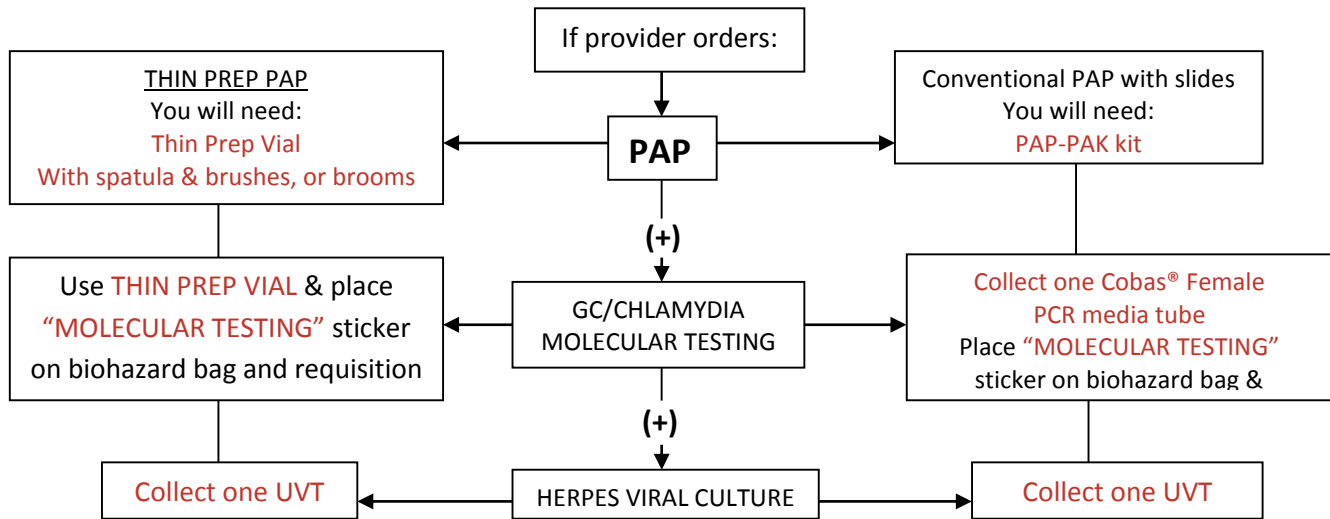


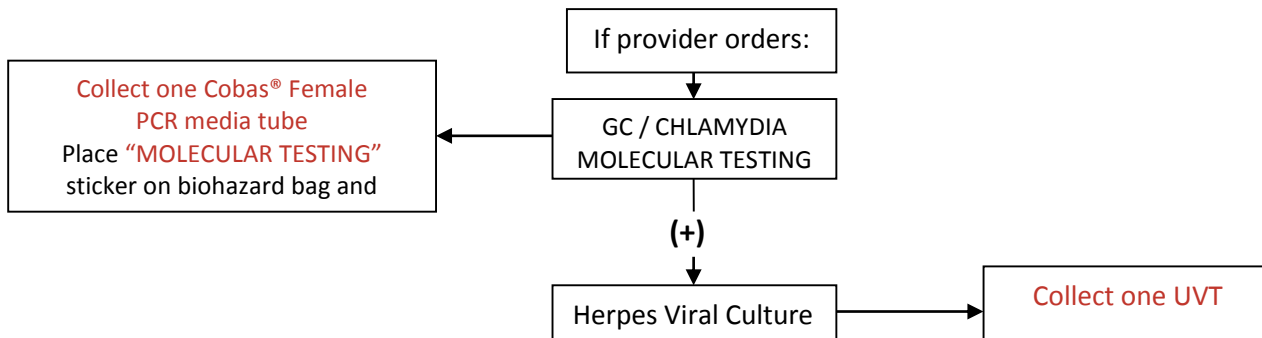
GC/Chlamydia Molecular Testing Flow Chart

ORDERING GC / CHLAMYDIA MOLECULAR TESTING and HERPES VIRAL TESTING WITH A PAP



If provider wants cultures instead of molecular testing, refer to the - [CULTURE FLOW CHART](#)

ORDERING GENITAL GC / CHLAMYDIA / HERPES TESTING WITHOUT A PAP



GC / CHLAMYDIA / HERPES CULTURE FLOW CHART

Culture needs to be performed if the site is non-genital or if it is a legal rape case.
Molecular testing cannot be performed on sites other than genital. A culture should be done.

